

#163 RUSTOP OUTDOOR

- Specially formulated to provide long term protection of external metal surfaces after machining.
- Rust protection against such elements as sun, water or high humidity for six months to one year.
- Can easily be removed for paint preparation with any industrial solvent.

#168 RUSTOP INDOOR

- Designed for rust-proofing elements right after tooling.
- Can be applied in a variety of methods: rolled, brushed, or preferably immersed.
- Can easily be removed for paint preparation with any industrial solvent.

#721 RUSTENDER

- Specially formulated to remove rust and corrosion.
- For use on ferrous and non-ferrous metal surfaces.
- Will not harm iron, steel, copper, brass or aluminum.
- Does not contain any hazardous or corrosive substances; environmentally friendly.



Before treatment with Rustender.



After treatment with Rustender.

#128N ODORLESS SULFURIZED CUTTING OIL

- Very low odor, chlorine free, heavy duty active sulfur-based straight cutting oil for ferrous metals and alloys with low machining ability rating.
- Recommended for difficult machining operations such as threading and tapping at high speeds, broaching and for alloy steels that are difficult to machine.
- Can be used on certain non-ferrous metals such as nickel, hastalloy and certain types of aluminum alloys.

#190 PENETRO 90®

- Lubricating and penetrating oil designed to unfreeze, lubricate and protect practically anything.
- Penetrates all types of moving parts.
- Coats surfaces with a light, clear lubricating film that stays on indefinitely.
- Increases equipment life.
- Reduces downtime caused by worn or dirty parts.
- Excellent for removing rusted bolts.



102 Barton Street
St. Louis, MO 63104
(314) 865-4100
1-800-325-9962
www.schaefferoil.com



Made in America

PB-1084 (06/10)



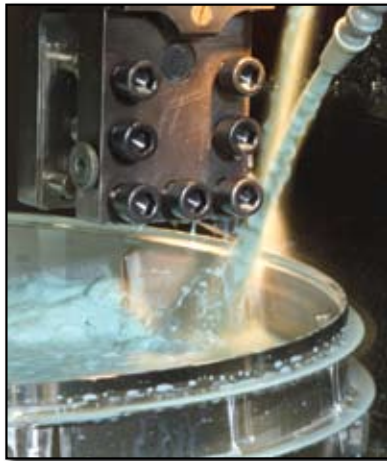
for the
**MACHINING
INDUSTRY**



#4II MAXKOOL SS™

(Semi-Synthetic)

Maxkool SS is a micro-emulsion semi-synthetic metalworking fluid designed to machine a wide variety of alloys from aluminum to cast iron. It exhibits excellent bio-static control along with non-staining qualities. Effective for grinding, milling, tapping, sawing, reaming, and other applications requiring moderate to high pressure fluid processes. Proprietary technology offers superior heat dissipation and fluid longevity, even in severe machining conditions.



#5II ULTRAKOOL SS™

(Semi-Synthetic)

Ultrakool SS™ is a low oil, micro-emulsion semi-synthetic metal removal fluid that exhibits excellent foam control, bio-static resistivity and non-staining properties. Specially designed for hard water, high pressure and low maintenance conditions. Proprietary formulation of synthetic polymers and specialized lubricants provides rapid heat dispensation, outstanding rust protection, extended tool life and superior bio-stability.



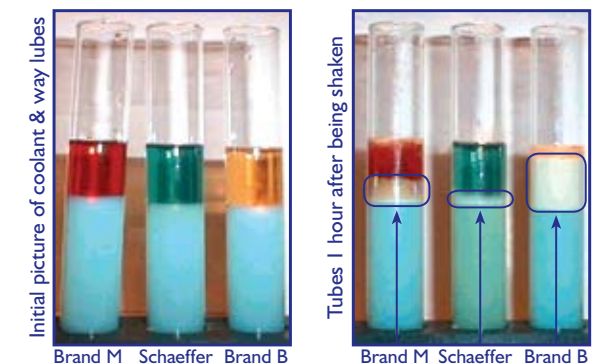
#6II SUMPFLUSH™ SUPREME

SumpFlush™ Supreme Machine Cleaner is a unique blend of surfactants and bio-static additives designed to remove debris and contamination from machining centers. These additives will penetrate bio-film and loosen debris allowing quicker removal and better cleaning. When allowed to circulate properly in contact and non-contact areas, the solution will solubilize hard water soaps, clean the distribution channels, and allow better flow of fluid through machine tools and flumes.

#160 MOLY SLIDE & WAY LUBE

- Moly Slide & Way Lube is an anti-wear extreme pressure oil that is specially formulated to exceed the lubrication requirements of machine tool slides and ways.
- Because of highly specialized additive packages, you can expect:
 - Elimination of stick-slip motion and chatter in moving machine parts.
 - Exceptional rust and oxidation, corrosion inhibiting properties.
- Because of the blending of Micron Moly® in the product, you can expect:
 - Reduced wear, scoring and galling.
 - Energy savings.
 - Reduced heat which leads to reduced operating temperatures and downtime.
 - Reduced frequency of gibb adjustment.
- Because of better adhesive-cohesive additives, you can expect:
 - Less product usage.
 - Less tramp oil.
 - Elimination of build-up.
 - Cleanup of lacquered-carbonaceous deposits.

Less Tramp Oil Contamination



A water soluble petroleum based coolant is diluted at a 6% ratio in tap water and mixed. 20 ml of coolant is poured into a 40 ml test tube. 10 ml of waylube is poured on top of the coolant. A stopper is placed on the test tube and the sample is vigorously shaken. The amount of emulsification is documented at predetermined time intervals.